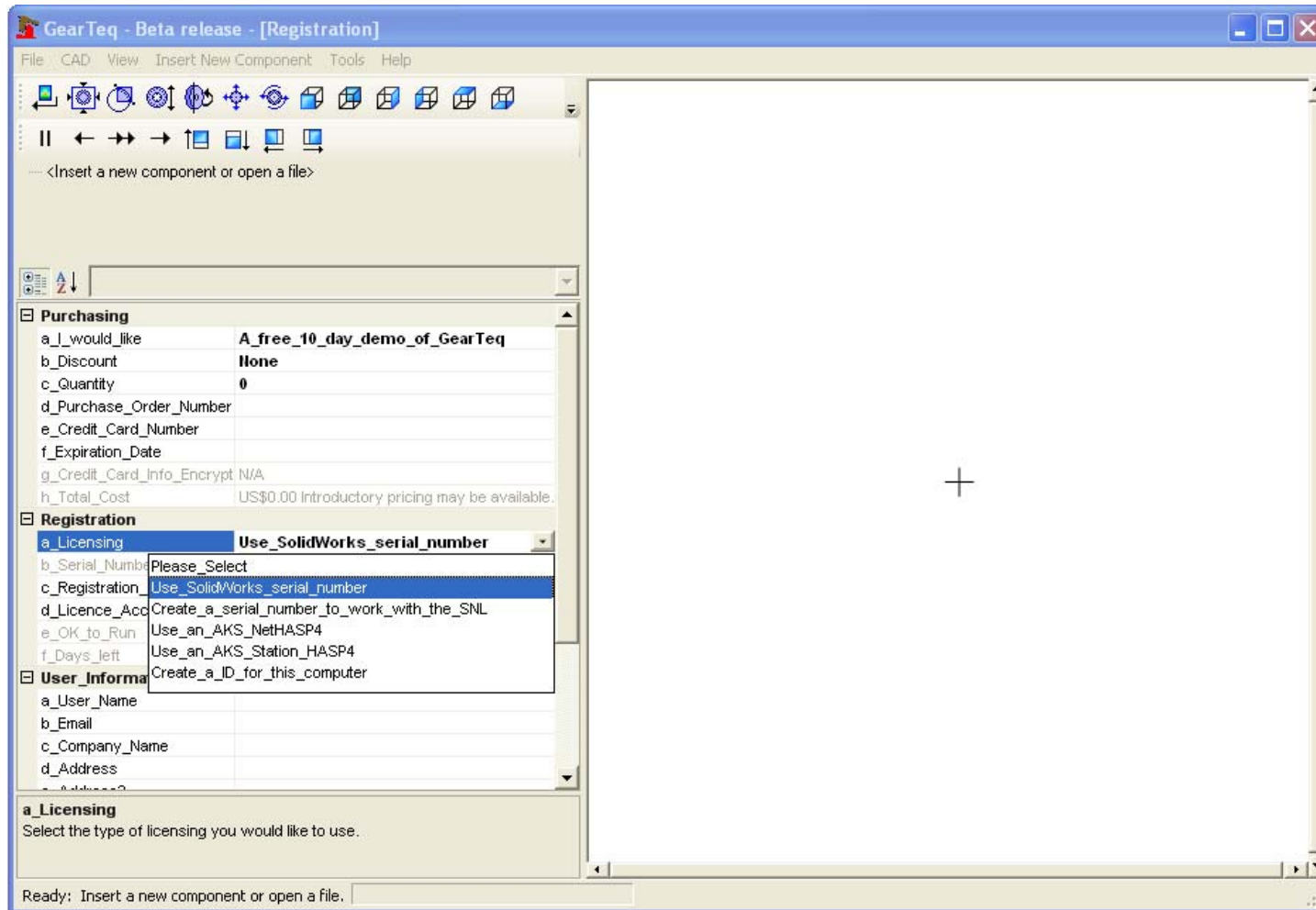
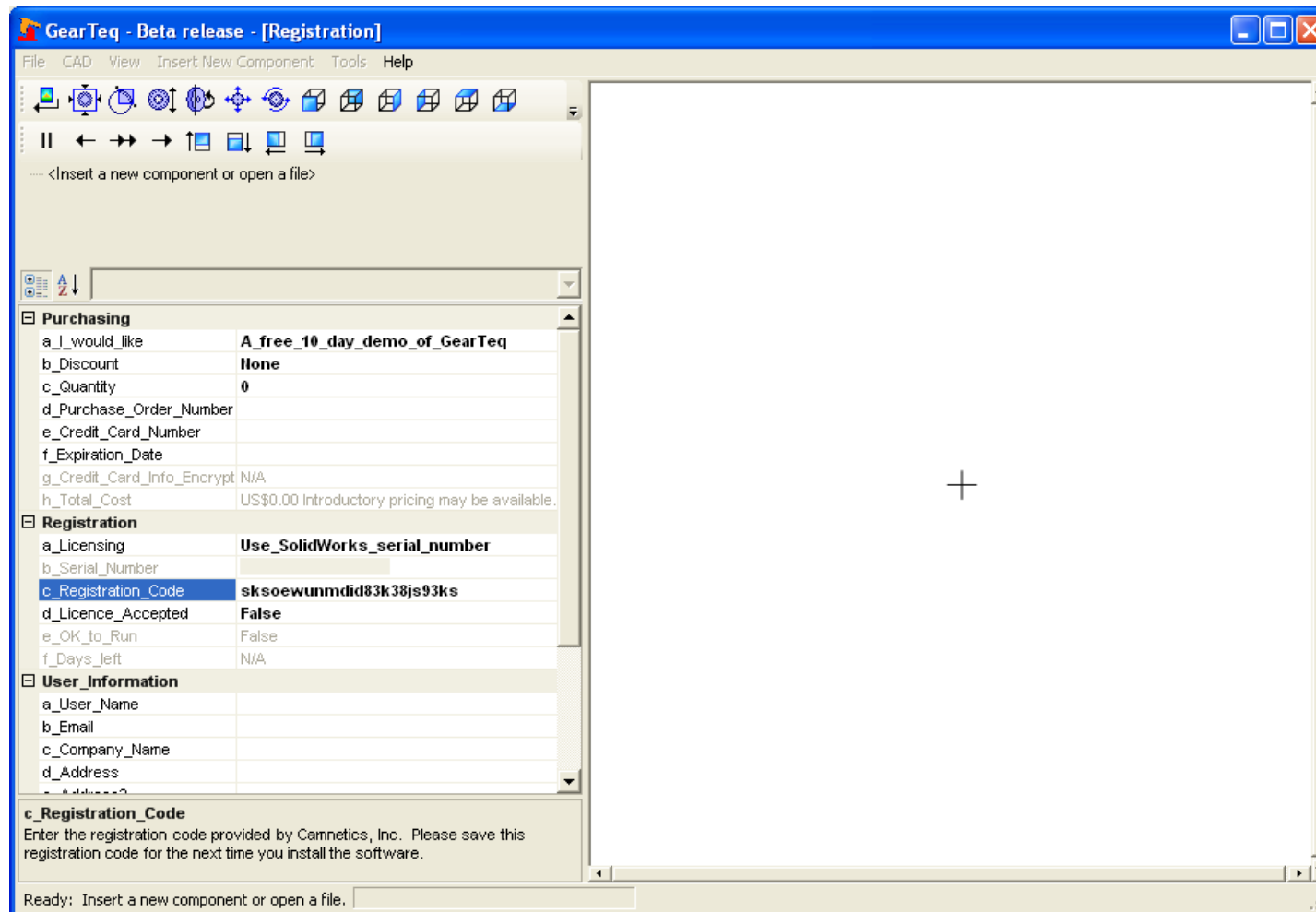


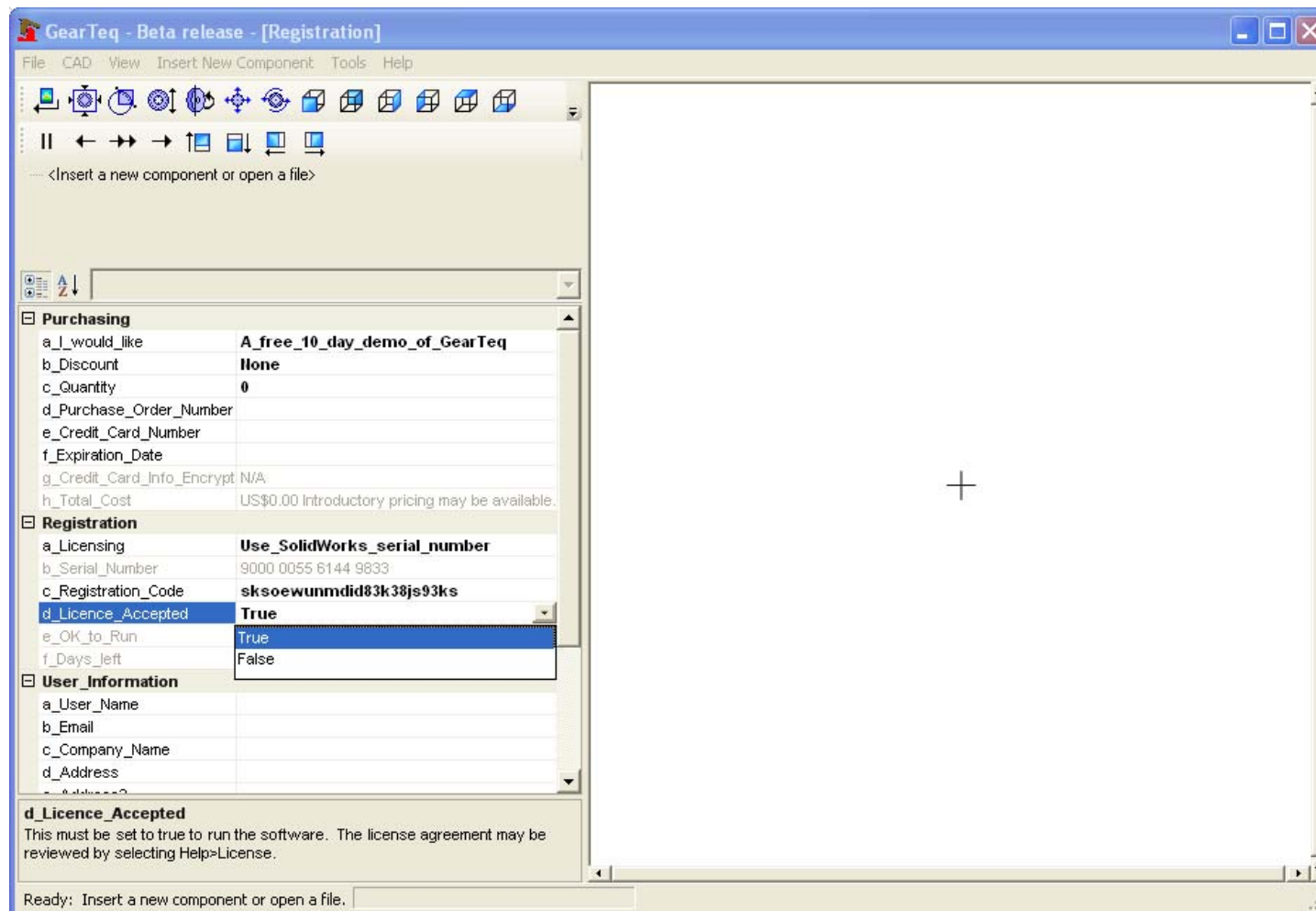
GearTeq™ Quick Start Guide



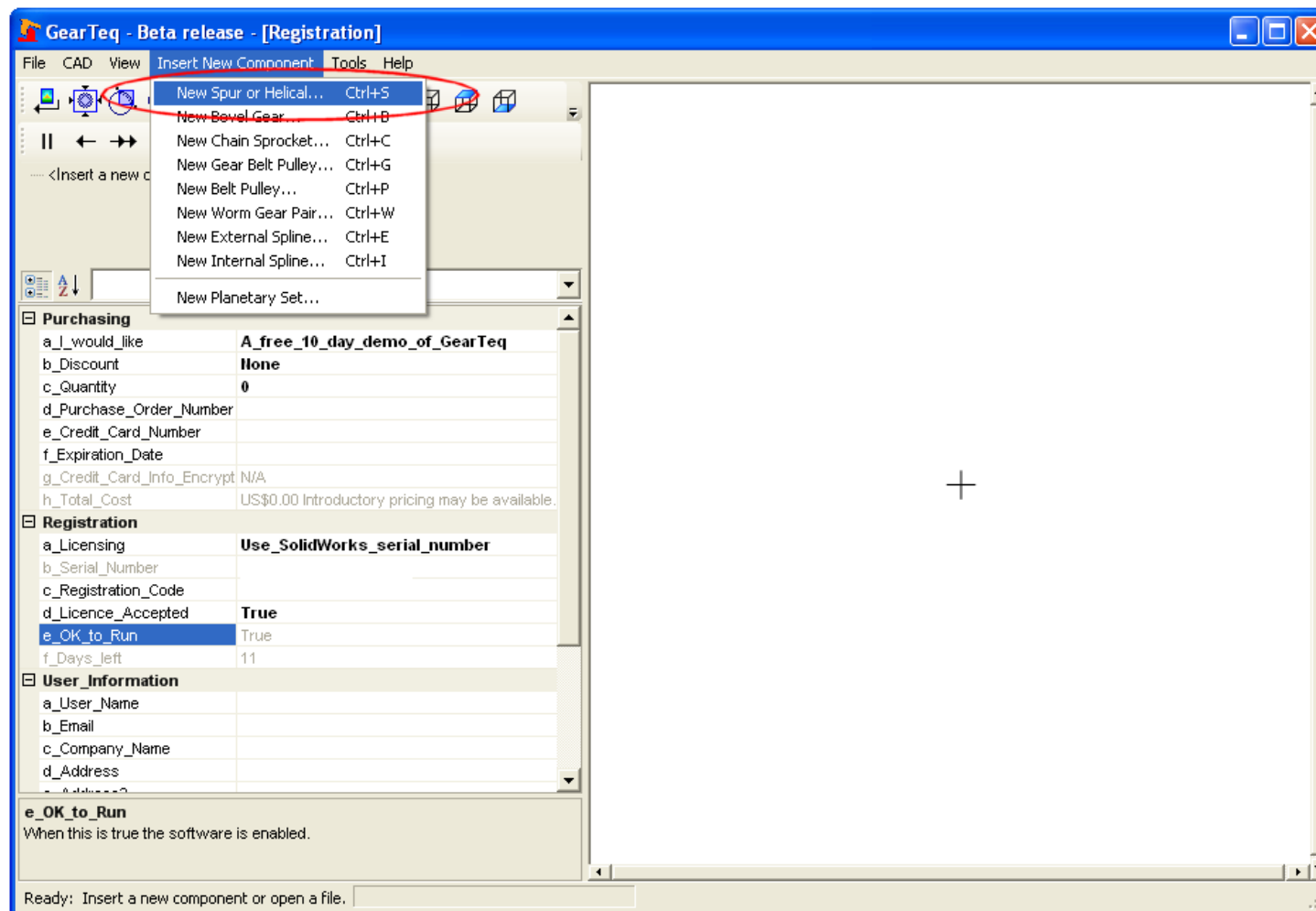
Set GearTeq to use the SolidWorks serial number.



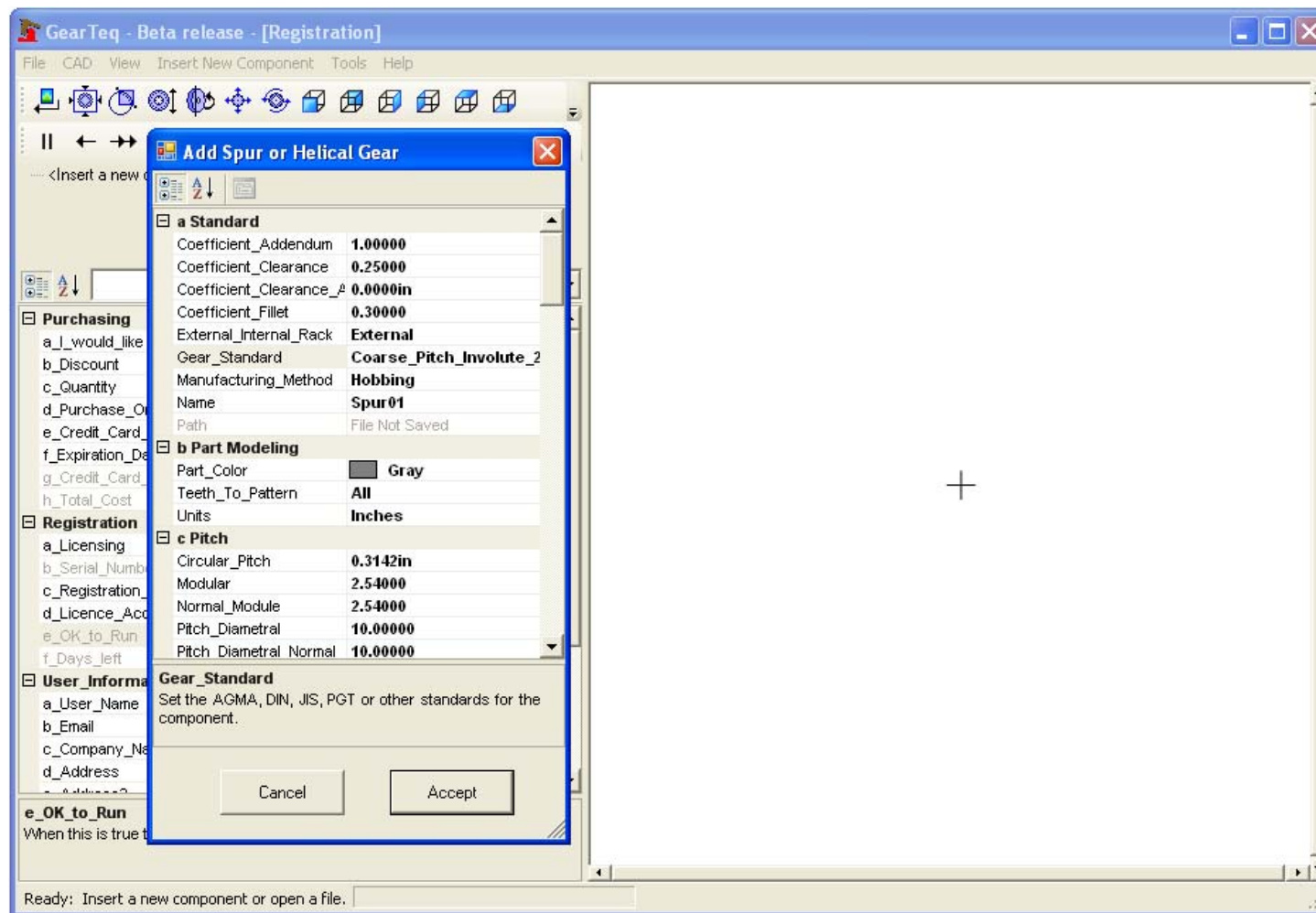
Enter the registration code provided by Camnetics, Inc. or your SolidWorks reseller.



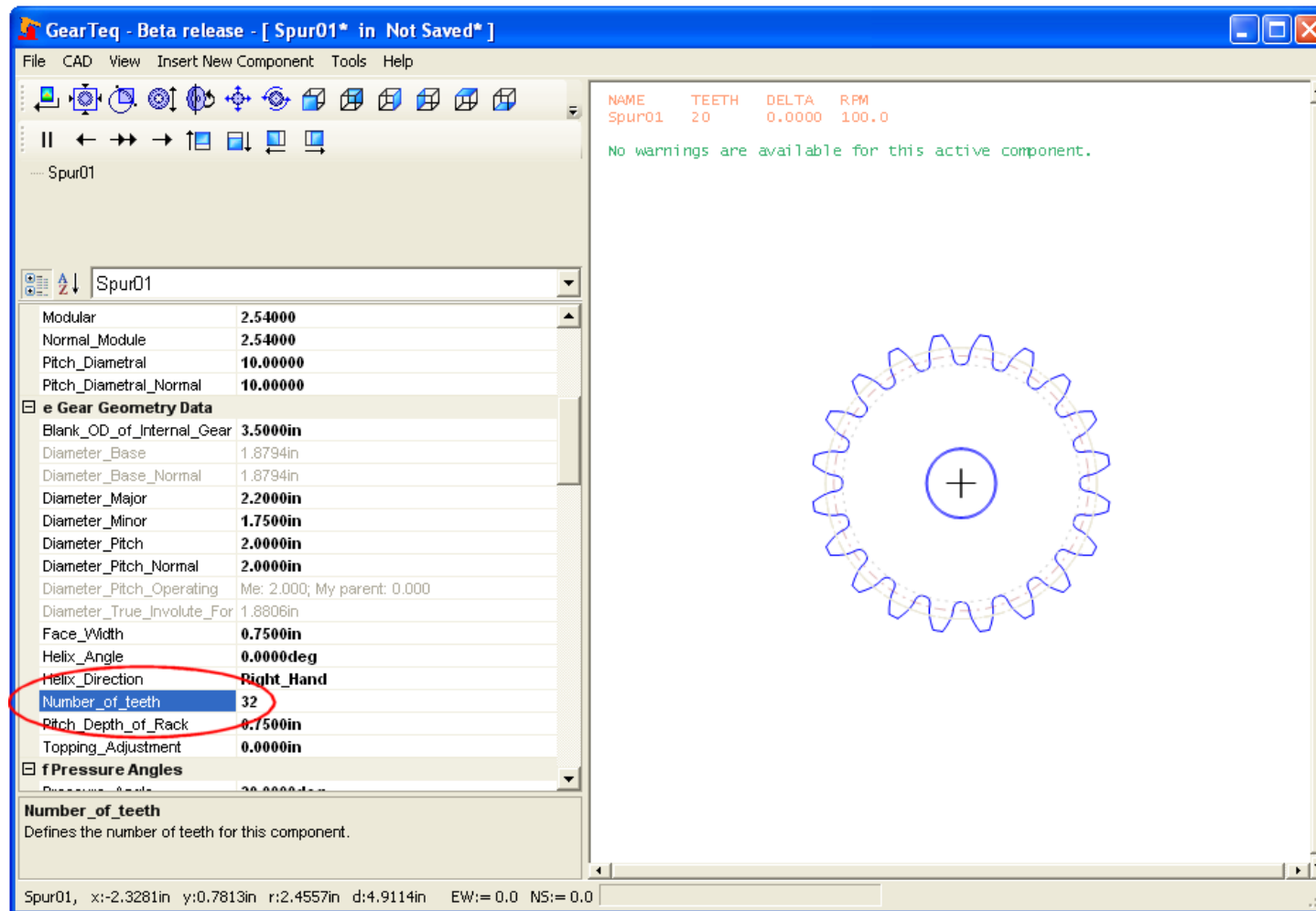
Accept the License agreement.



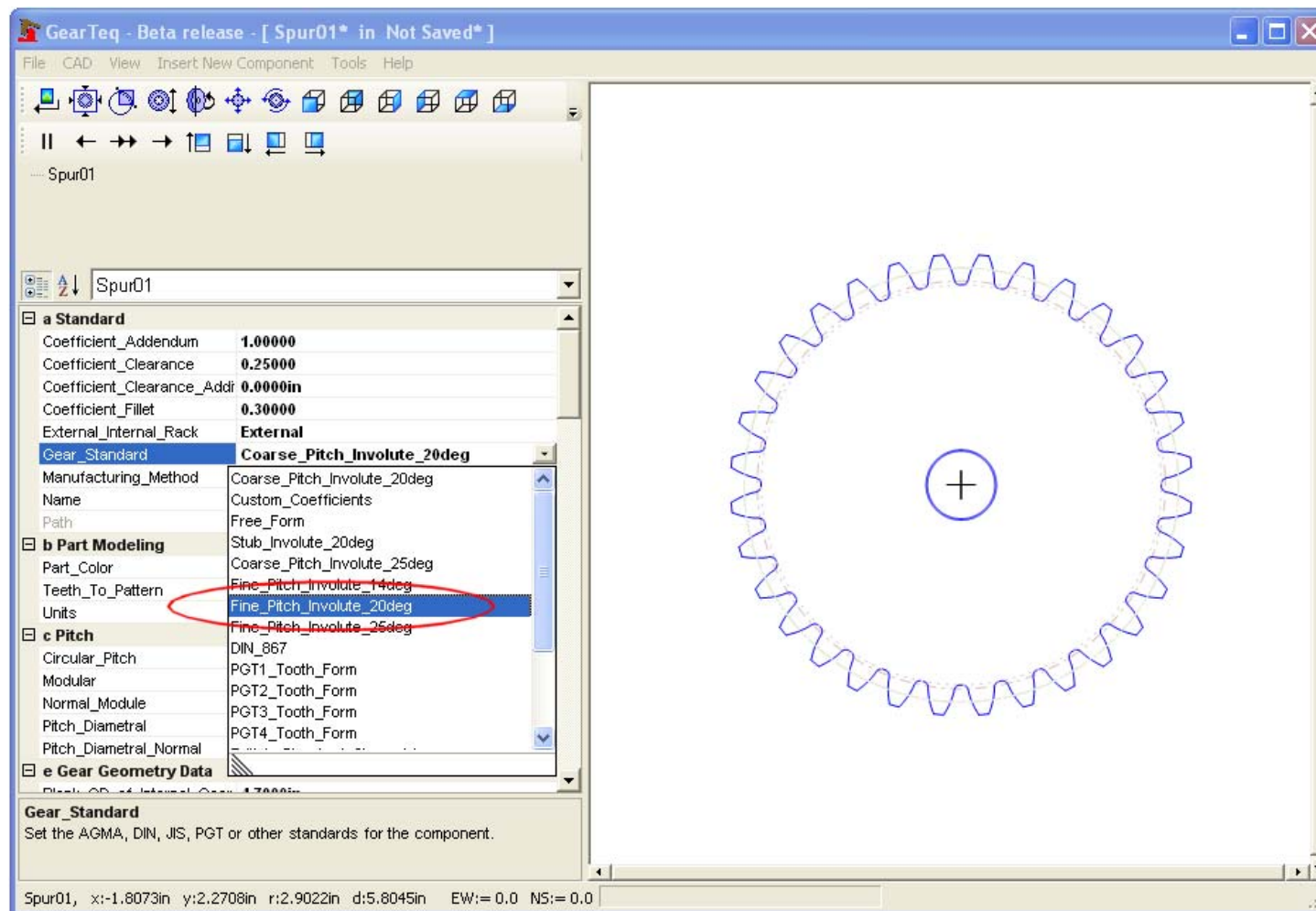
Insert the first component.



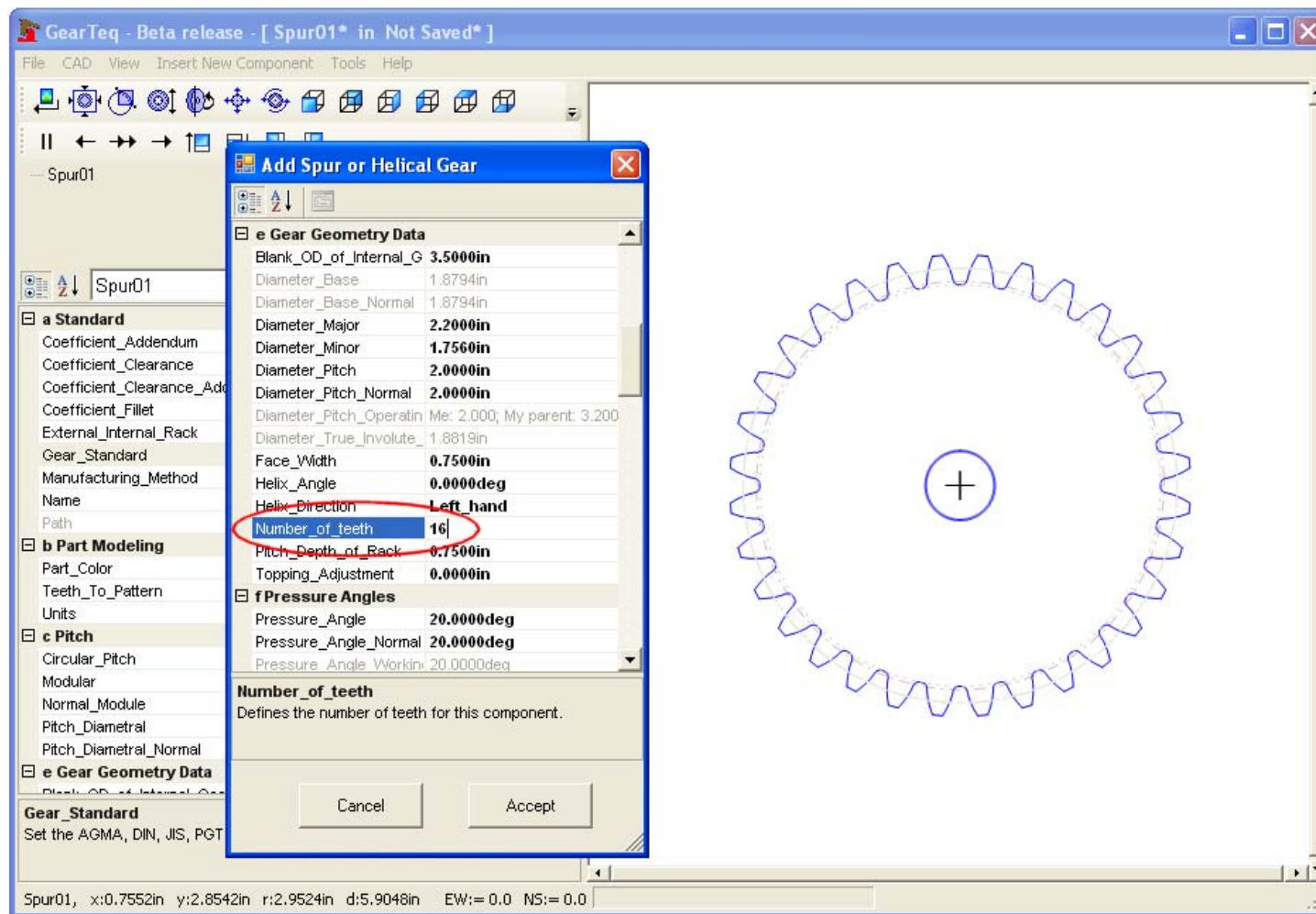
Accept the default settings for the first component.



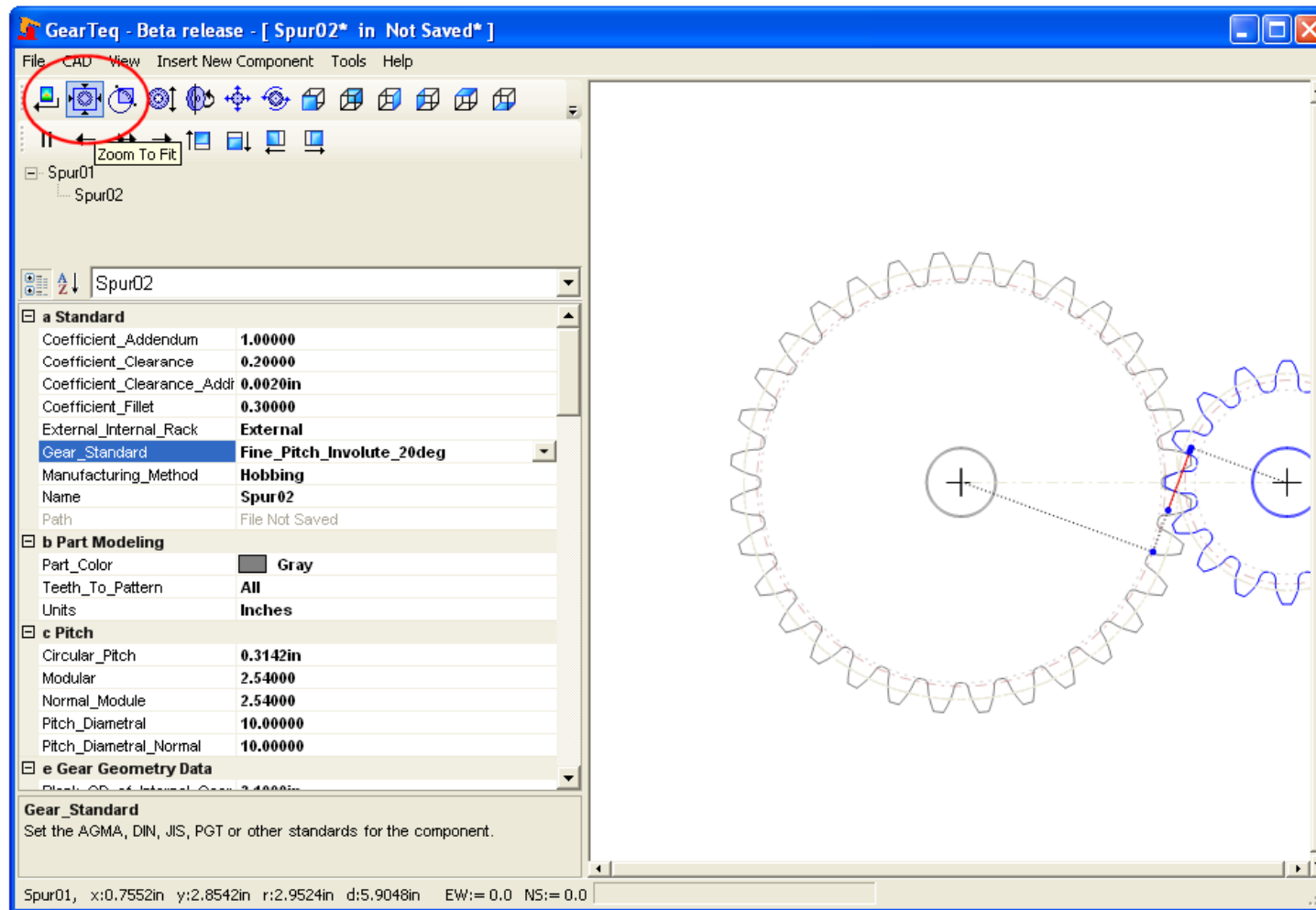
Scroll down and change the number of teeth from 20 to 32



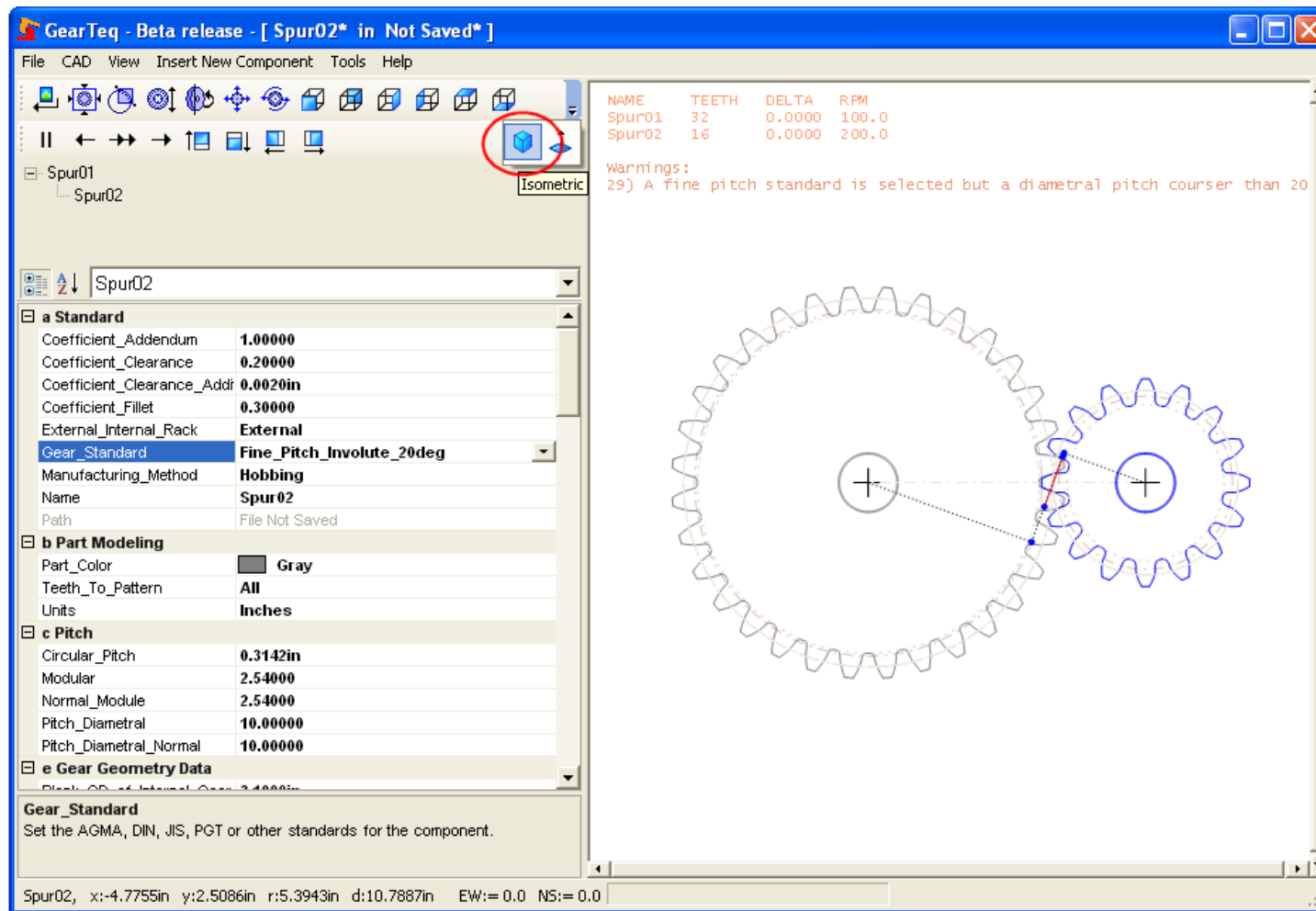
Change the Gear Standard to Fine Pitch Involute 20 degree.



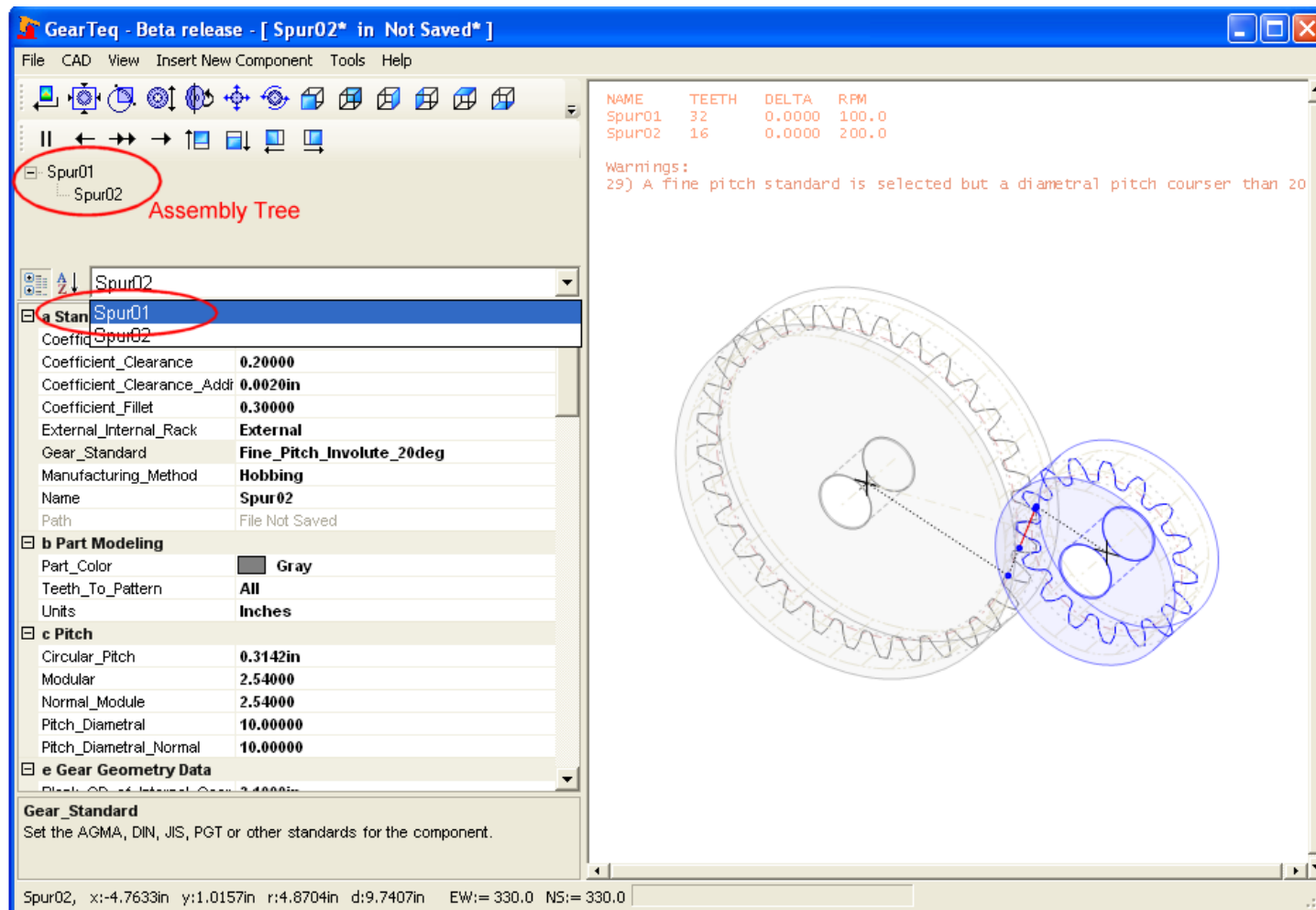
Insert a new spur gear and change the number of teeth to 16 before accepting the new component.



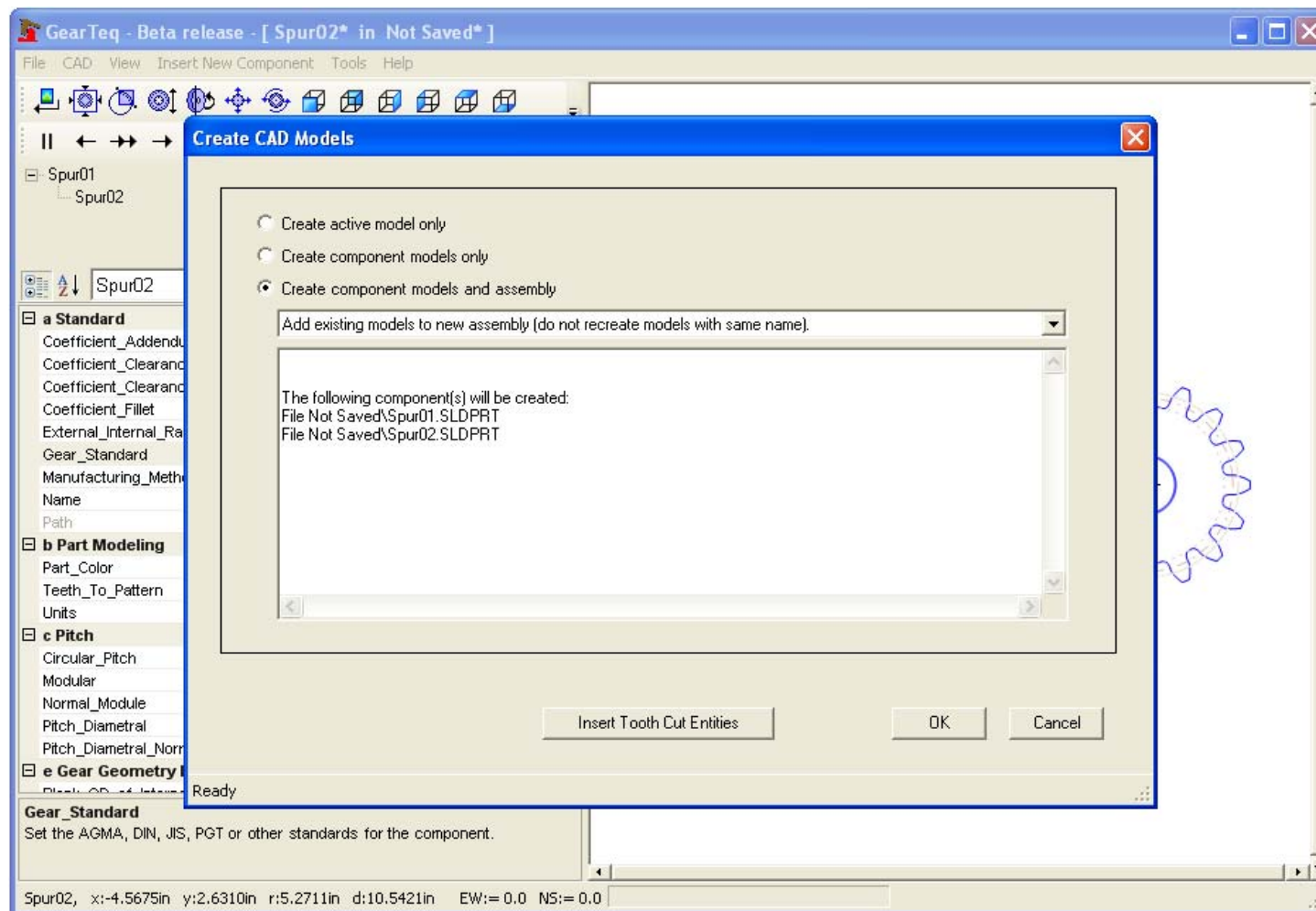
Click the Zoom to Fit button on the tool bar.



Click on the Isometric view button on the tool bar.



To switch between components either select another component from the drop down list or double click on a component name in the assembly tree.



To create the CAD Models and Assembly (Menu, CAD> Create CAD Models and Assembly...)

Other features to check out:

e Gear Geometry Data, Face Width

g Tooth Form, Backlash

k Mating Component, Mate Angle

k Mating Component, Z Distance

z Hub Data, A hub can be created, swapped sides, copied from one part to another by using the Tools menu options.

The Items under the Tools menu heading

The items in the Options menu (Menu, Tools>Options...)

Right click on the drawing window and move the mouse to do on screen measurements. The readout is in the upper left hand corner on the window.

The VCR buttons to drive the gear set.